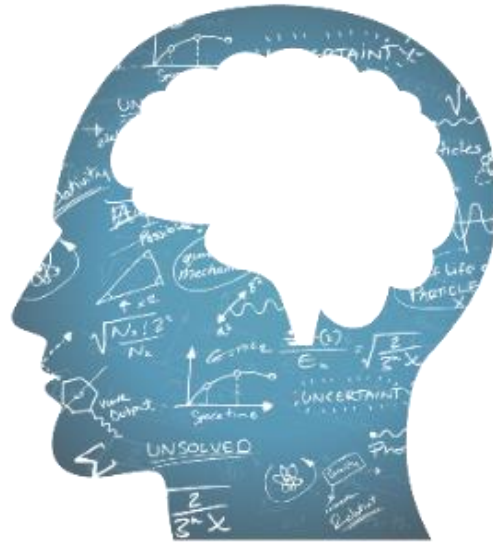


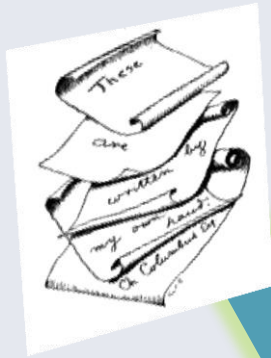
# educed

**José M. Faria**  
Co-Founder  
[jmf@educed-emb.com](mailto:jmf@educed-emb.com)



PROVA





Testing



# PROVA

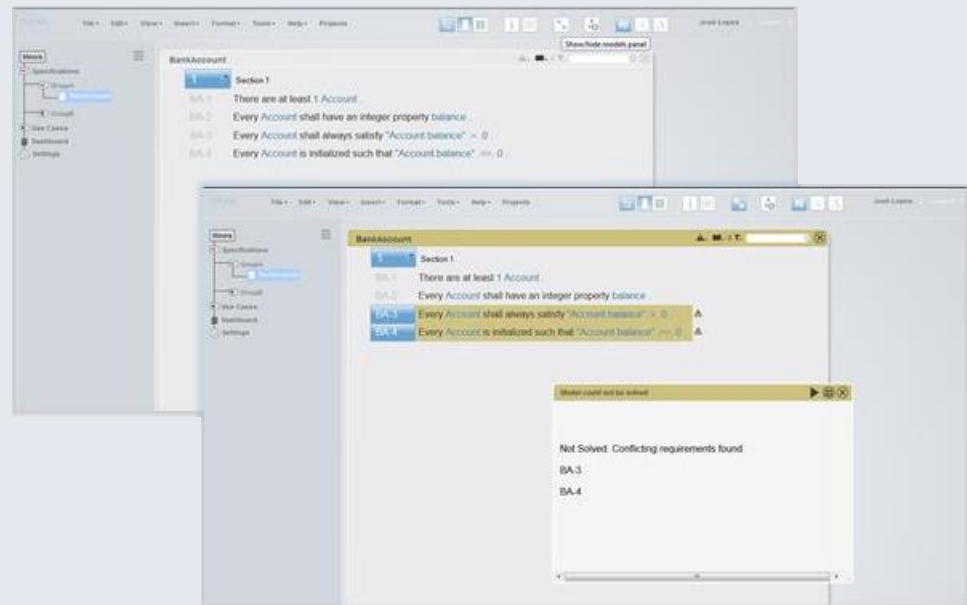


- ✓ / X
- Predict Behaviour
- Is “*THIS*” guaranteed?
- Early identification errors

# PROVA

## ■ Conflicting requirements identification

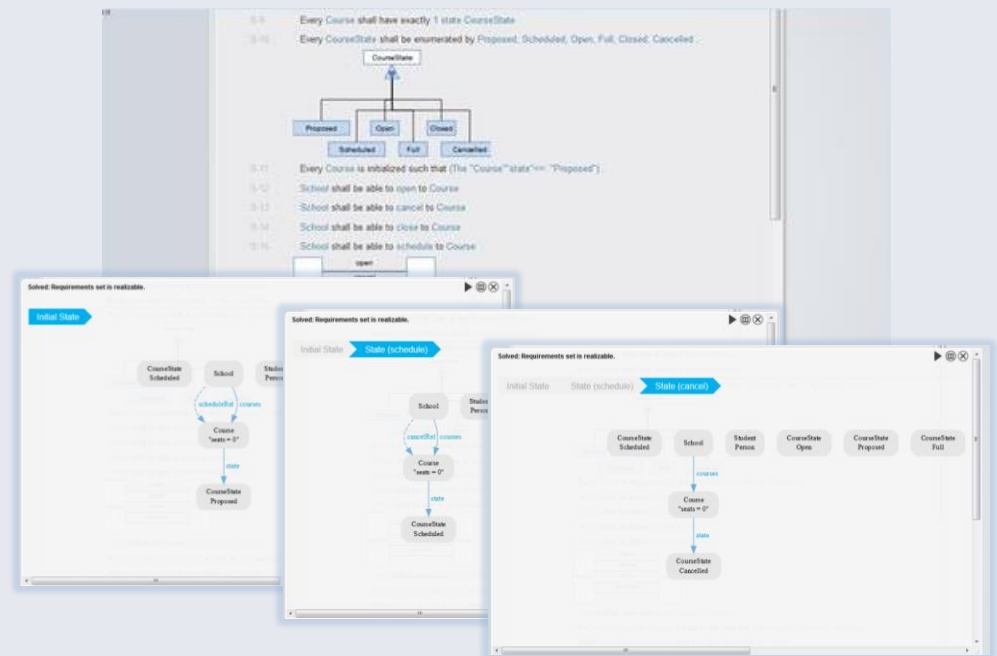
PROVA automatically pinpoints contradictory requirements.



# PROVA

## ■ Behaviour simulation & visualization

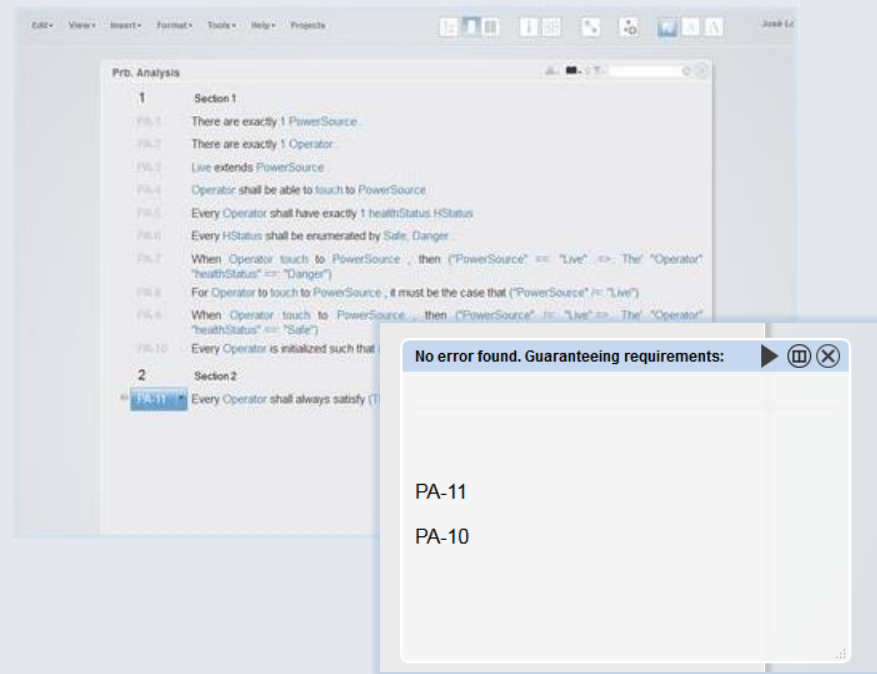
To assist eliciting and clarifying the requirements, visual scenarios that simulate the system behaviour are automatically generated.



# PROVA

## ■ Semantic check of properties

PROVA verifies that the requirements satisfy desired properties.

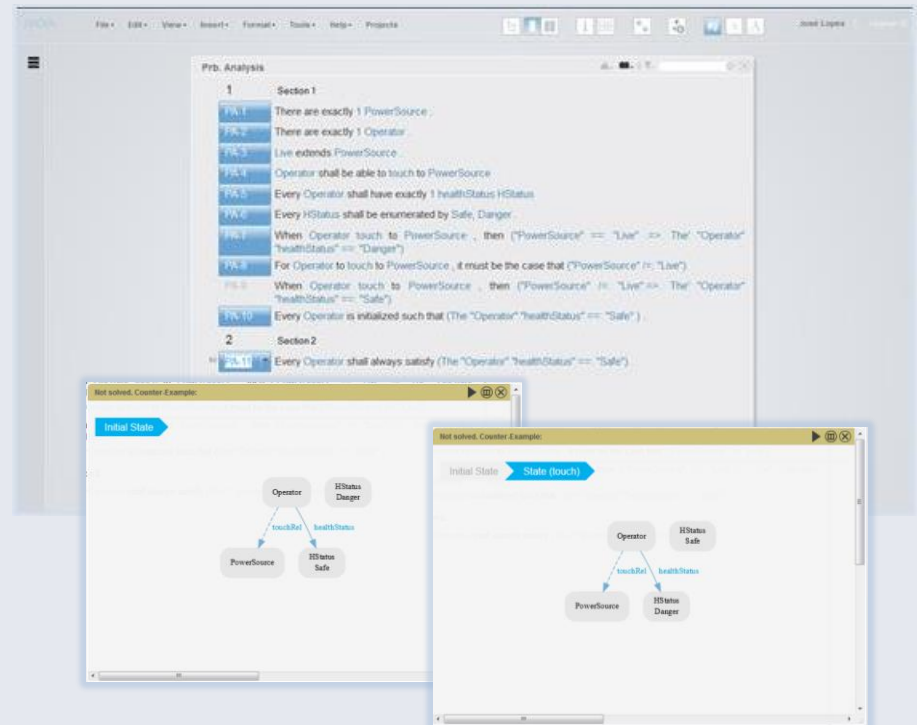




# PROVA

## ■ See the errors

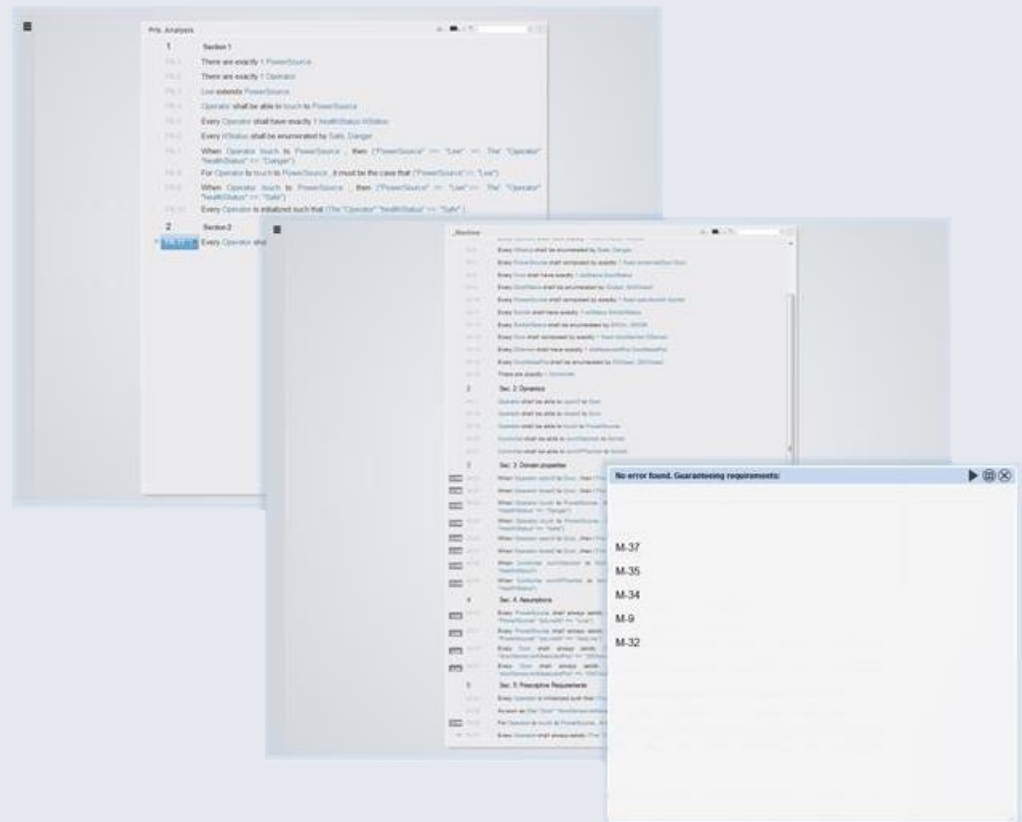
When the requirements fail to satisfy a given property, PROVA generates a graphical representation illustrating the problem.



# PROVA

## ■ Incremental specification

No matter how large and complex your system is, you can always *start small* and incrementally add detail to the requirements.




# Requirements are the key

# Trust them to PROVA



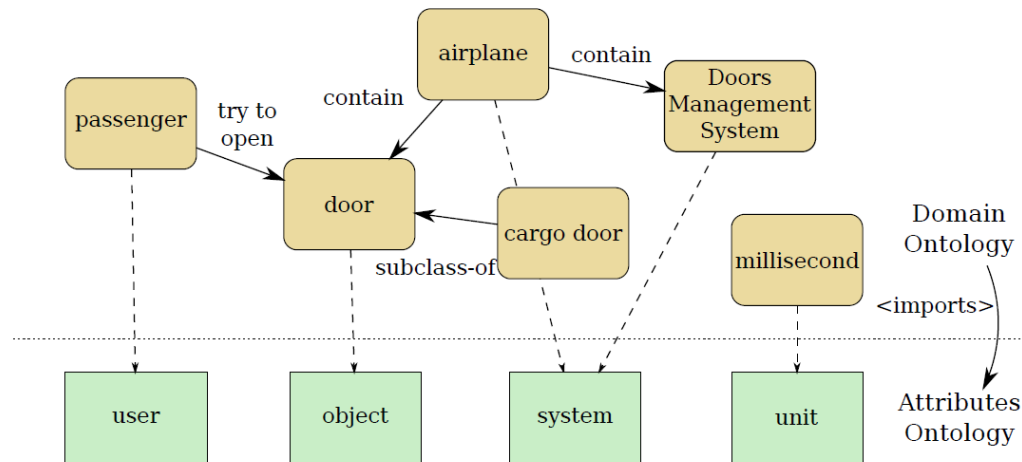
PROVA



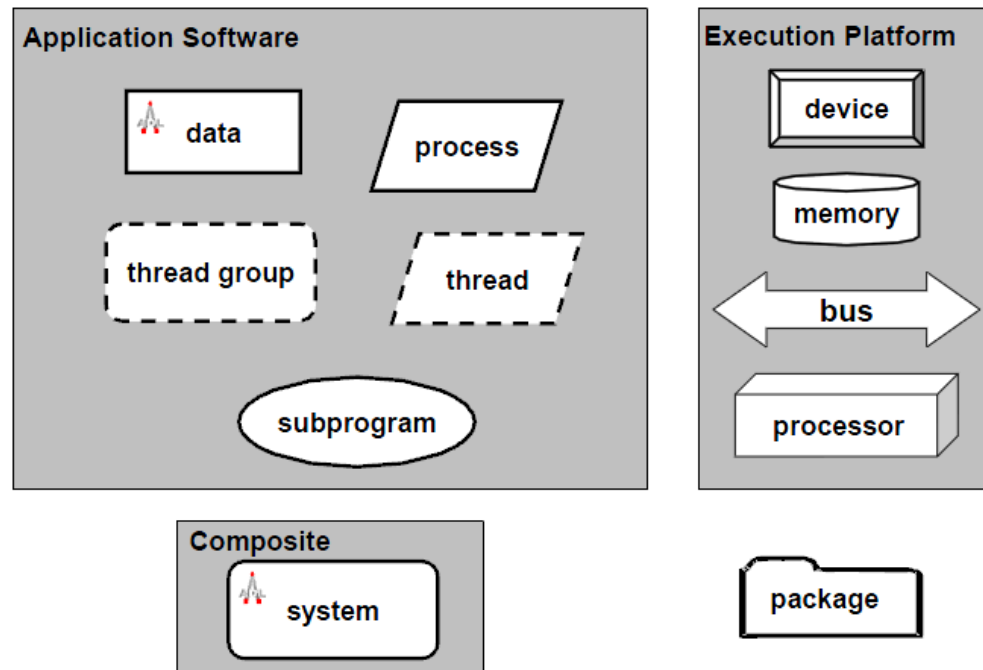
0%

# Ambiguities Inconsistencies Omissions

# P.1 : Ontologies



# P.2 : Architecture connection



# educated



MFES 2013-14

PROVA